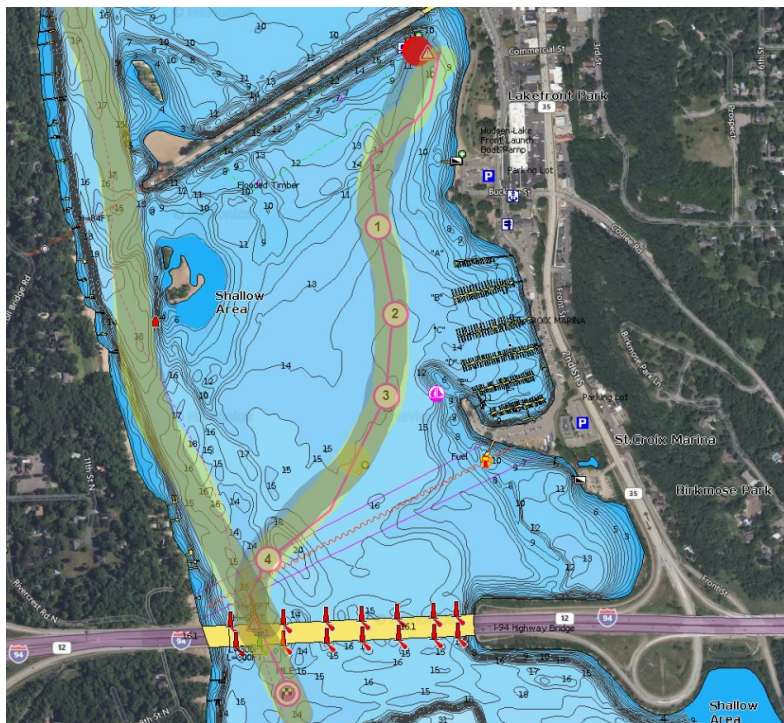


NOTICE TO BOATERS

33 CFR 83.09 (RULE 9) OF THE CODE OF FEDERAL REGULATIONS

- (b) A vessel of less than 20 meters in length or a sailing vessel shall not impede the passage of a vessel that can safely navigate only within a narrow channel or fairway.
- (g) Any vessel shall, (unless emergency circumstances require), avoid anchoring in a narrow channel.
- (C) A vessel engaged in fishing shall not impede the passage of any other vessel navigating within a narrow channel or fairway.
- (d) A vessel must not cross a narrow channel or fairway if such crossing impedes the passage of a vessel which can safely navigate only within such channel or fairway. The latter vessel must use the signal prescribed in Rule 34(d) ([§ 83.34\(d\)](#)) (HORN 5 short blasts) if in doubt as to the intention of the crossing vessel.

Federal and state law prohibit anchoring in the shaded areas below.



Clear passage must be maintained from the Hudson swing bridge to the Interstate 94 bridge, and
From the Hudson excursion and marina docks to the Interstate 94 Bridge.